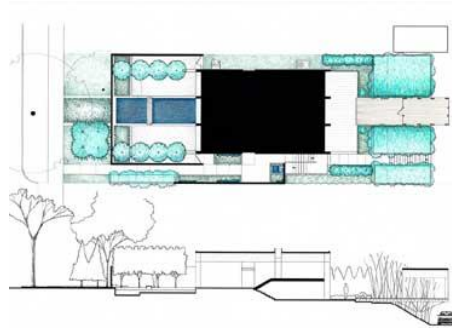
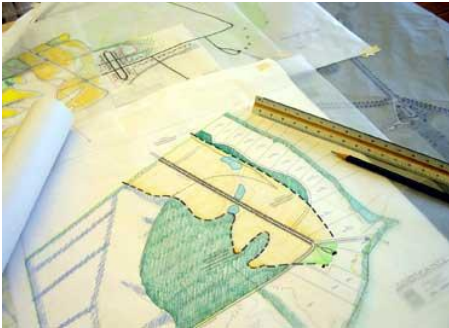


ARC 1302 – Site Plan

Rough Analysis

Due Date: Beginning of class



Graham Landscape Architecture
(<http://www.grahamlandarch.com/profile/siteAnalysis.htm>)

Using an aerial image of the site (Google Earth), complete a series of analytical drawings on **tracing paper overlays using color markers** to include the following information:

1. Orientation – cardinal points
2. Boundaries
3. Zones (park, residential neighborhoods, classrooms, etc.)
4. Prevailing Wind Direction – summer & winter
5. Sunlight - direction (morning, noon, and afternoon)
6. Paths (vehicular & pedestrian)
7. Approach (vehicular & pedestrian)
8. Topographical conditions (lake, gardens, etc.)
9. Existing man made structures
10. Figure Ground

You are asked to complete one drawing per idea on tracing paper - 11 x17 or 18 x 24 format. All of the drawings have to reference the same site image and have to be of identical scale.

These drawings are to be rendered using color pencils or markers. When using color, please remember to be consistent as to what the specific color represents.

All of these individual drawings completed on tracing paper will overlap to create one combined analysis of the site.

Bring your work to class for evaluation and bring photographs/images to create a photomontage of the actual site.

Aerial

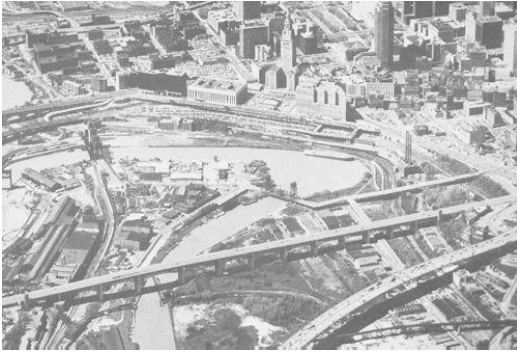
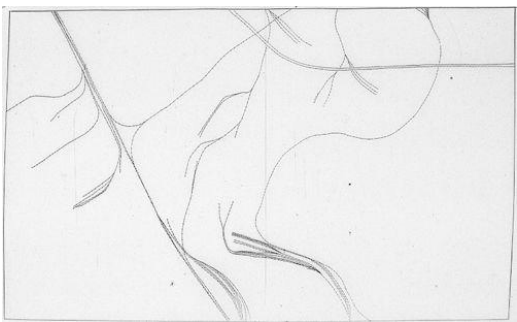


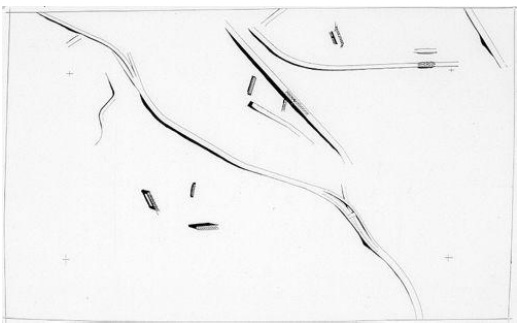
Figure Ground



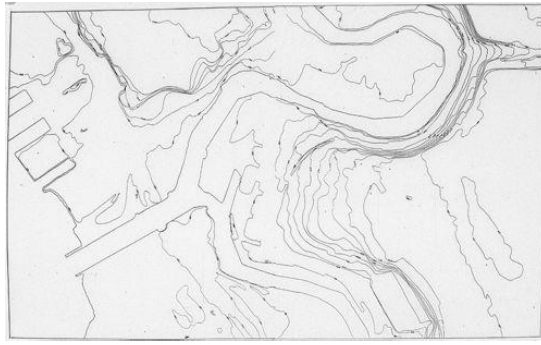
Rails



Bridges



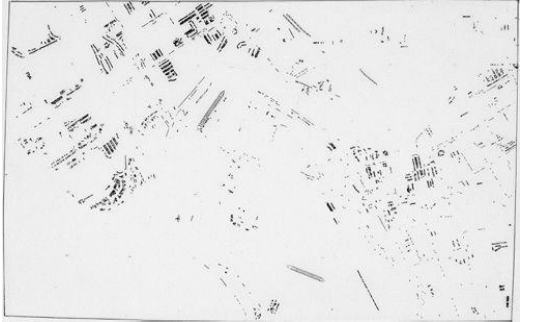
Topography



Roads



Transportation



Composite

